

# Patch Panels

## Wall Mount Patch Panel

Wall Mount Patch Panels are designed for connecting different SCS subsystems and network equipment to each other with patch cords.

**NIKOMAX NMC-WP06UE2-GY (Cat.6)** and **NMC-WP06UD2-GY (Cat.5e)** are consist of two parts: a base which can be mounted on the wall, and the front part is with IDC contacts and connectors. This design makes it quick and convenient to do cable installation before installing the panels on the wall.

The panels are made of durable, high quality plastic, in a practical gray. Each accommodates 6 port RJ45 / 8P8C Category 5e or 6. IDC contacts for 110-type knives and are color-coded according to two wiring standards: T568 A and B. The patch panels compatible with the NMC-315DR tool for the fast termination of several twisted pairs, which also allows you to significantly speed up their installation.

For ease of administration, all ports are numbered, and there are additional areas for labeling.

Additional break out windows to sum up the cable out of the wall or the other side (if necessary start cables on both sides)

The panels can be mounted on the wall at double-sided adhesive base or screws

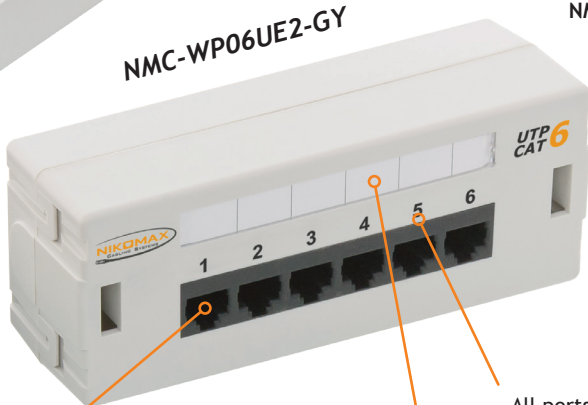
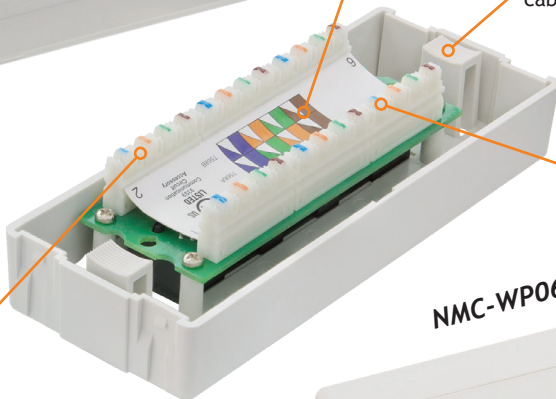
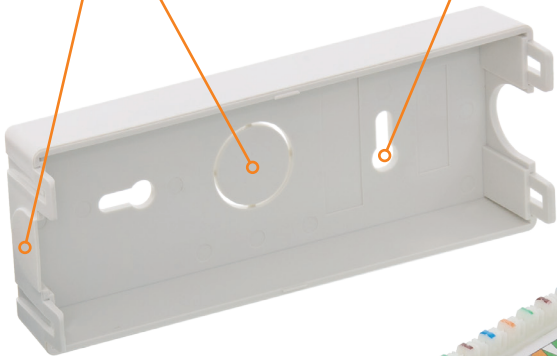
Two wiring standards: T568A / B

Loops for mounting cable tie

Colored tags



NMC-315DR



NMC-WP06UE2-GY

All ports numbered

Additional platform for marking

Gold-plated contacts (50 micro-inch): not less than 750 mating cycles

Track design minimizes the crosstalk in connector (for Cat.6)

Universal IDC contacts for 110 / Krone knives compatible with 110 type tool and NMC-315DR for fast termination 5 pairs

For the convenience termination, contact knives are provided with slots, firmly hold the wires



### Accessories

Punch Down Tool:  
NMC-315DR  
NMC-3640RB

Cable Cutter:  
NMC-502C  
NMC-222

Cable Stripper:  
NMC-S501B

The manufacturer reserves the right to alter the appearance and characteristics of the product, without compromising the product's functionality

### Specifications

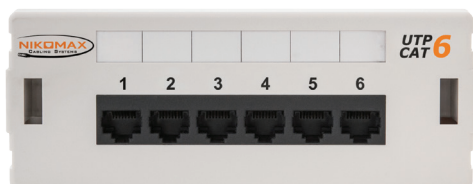
	NMC-WP06UE2-GY	NMC-WP06UD2-GY
Category	6	5e
Bandwidth	250 MHz	100 MHz
Type	Unshielded	
Number of Ports	6	
Connector	RJ45/8P8C	
Connector Material	Phosphor bronze	
Plating	Gold (50 micro-inches) Nickel (100 micro-inches)	
Durability (mating cycles)	Not less than 750	
IDC Type	110	
Wiremap	T568A/B	
Conductor Diameter	~24-22 AWG (0.50-0.65 mm)	
IDC Connector Material	Phosphor bronze	
Plating	Tin (100 micro-inches)	
Plastic Material	High-strength, non-flammable, meets UL94V-0	
Marking	All ports are numbered, there are additional labeling area	
Installation	Wall Mount	
Housing Material	Plastic, meets UL94V-0	
Dimensions (WxHxD)	155x60x44 mm	
Color	Gray	
Insulation Resistance ( $\Omega$ )	Not less than 500 M(at constant voltage of 100 V)	
Dielectric Withstand Voltage	Up to 1000 V, 60 Hz for 1 minute	
Contact Resistance ( $\mu\Omega$ )	Not more than 20	
IDC Contact Resistance ( $\mu\Omega$ )	Not more than 2.5	
Compliance	ISO / IEC 11801, EN 50173 and ANSI/TIA-568-C.2	
Applications	10BASE-T, 100BASE-TX, 100BASE-T4, 1000BASE-T, 10G-BASE-T (55M for Cat. 6), ATM-25, ATM-51, ATM-155, 100VG-AnyLan, TR-4, TR-16 Active, TR-16 Passive	
Temperature Ranges	Storage -40 to +70 ° C. Installation 0 to +50 ° C. Operating -10 to +60 ° C	
Packaging	Cardboard box	
Warranty	1 yaer	

### Ordering Table

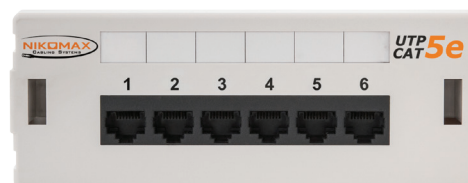
Part Number	Category	Ports	Individual package		Collective package			Freight package		
			Volume, m <sup>3</sup>	Weight, kg	Q'ty	Dimensions,mm	Weight, kg	Q'ty	Dimensions,mm	Weight, kg
NMC-WP06UE2-GY	6	6	0.000420	0.155	18 pcs.	250x190x210	3.100	72 pcs.	515x400x230	13.3
NMC-WP06UD2-GY	5e	6	0.000420	0.155	18 pcs.	250x190x210	3.100	72 pcs.	515x400x230	13.3

### Package Content

- Patch panel - 1pc.
- Cable tie - 2 pcs.
- Sticky base - 1 pc.
- Screws - 2 pcs.
- Installation Instructions - 1 pc.



**NMC-WP06UE2-GY**  
UTP, 6 ports Cat.6



**NMC-WP06UD2-GY**  
UTP, 6 ports Cat.5e

The manufacturer reserves the right to alter the appearance and characteristics of the product, without compromising the product's functionality