

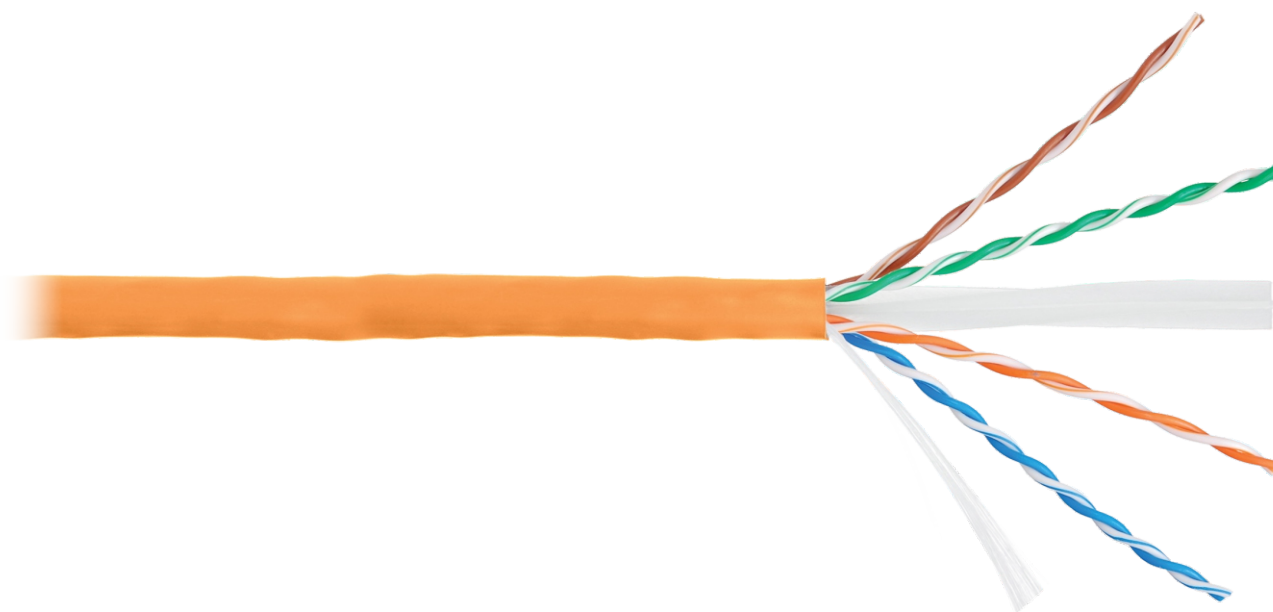
EC-UU004-6-LSZH-OR NETLAN cable, UTP 4 pairs, Cat. 6, indoor, LSZH, solid, 250MHz, 305m

- ✓ Applications on 10 Gbit/s speed
- ✓ Indoor

Four-pairs lan cable 6 category is used for organizing high-speed cable segments with data transfer rates up to 10 Gbit/s. Also it can be used for transmitting analog information.

Cable EC-UU004-6-LSZH-OR have a 4 pairs twisted copper conductors, unshielded, corresponds to 6 category and is intended for indoor installation.

Shipped in cardboard boxes of 305 meters. For usability and transportation safety two individual boxes are merged in one transport cardboard box.



Basic equipment:
Cable

305m.

Manufacturer reserves the right to change external view and characteristics of product without reducing it's consumer properties

CHARACTERISTICS

P/N	EC-UU004-6-LSZH-OR
Category	6
Bandwidth, MHz	250
Construction	U/UTP
Number of twisted pairs	4
Conductors material	Bare copper
Conductors type	Solid
Conductors diameter, mm	0.505±0.005
Conductors insulation material	HDPE
Conductors insulation thickness, mm	0.20±0.02
Conductors insulation outer diameter, mm	0.92±0.03
Outer jacket material	LSZH
PR Class	Dca
Usage	Indoor
Jacket thickness, mm	0.5±0.05
Jacket outer diameter,	5.8±0.2
Jacket color	Orange
Protective film	-
Separation	Yes, polyester
Rip cord	Yes
Mass density per unit length, kg/km	35.5
Bending radius without load, D	8
Bending radius with load, D	4
Tensile strength, H	80
Burst strength, H	400
Impedance, Ohm	100±15
Max. conductor resistance (DC), /km	93
Standard compliance	Meets the standards requirements: ISO/IEC 11801, EN 50173 and TIA/EIA-568
Application supporters	10BASE-T, 100BASE-TX, 100BASE-T4, 1000BASE-T, 10GBASE-T, ATM-25, ATM-51, ATM-155, 100VG-AnyLan, TR-4, TR-16 Active, TR-16 Passive
Temperatures ranges °C	Storage from -20 to +60. Installation from 0 to +50. Exploitation from -20 to +60
Length, m	305
Package	Individual - cardboard box / transport cardboard box (2 individual boxes)
Package size (individual/transport, W x H x D), mm	205x390x390 / 430 410 410
Warranty	1 year

ORDERING TABLE

P/N	Category	Construction	Usage	Jacket color	Length, m	Volume, m3	Mass, kg
EC-UU004-6-LSZH-OR	6	U/UTP	Indoor	Orange	305	0.033600	11.450

Manufacturer reserves the right to change external view and characteristics of product without reducing it's consumer properties



Cable ID: EC-UU004-6-LSZH-OR

Date / Time: 14/04/2020 10:50:30

Headroom 0.6 dB (NEXT 36-78)

Test Limit: ISO11801 PL Class E

Cable Type: Cat 6 U/UTP

NVP: 69.0%

Operator: FOMICHEV DMITRIY

Software Version: V6.4 Build 4

Limits Version: V7.4

Calibration Date:

Main (Module): 08/08/2019

Remote (Module): 08/08/2019

Test Summary: PASS

Model: DSX-8000

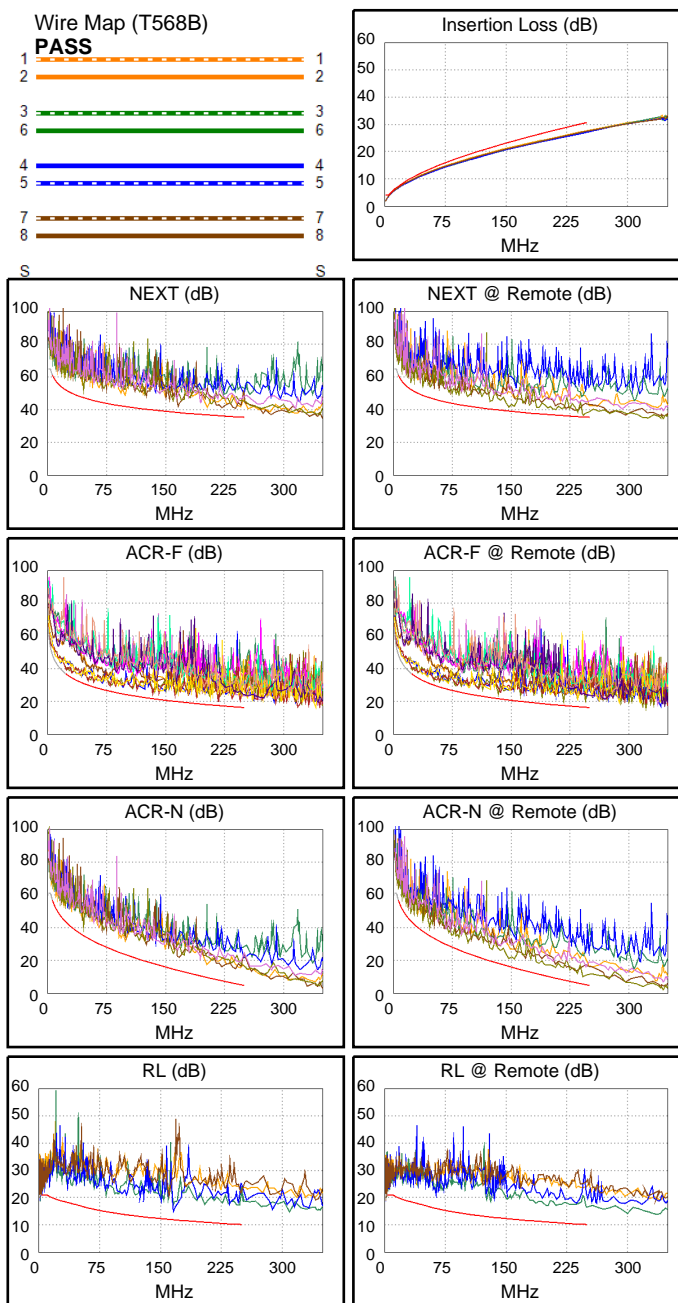
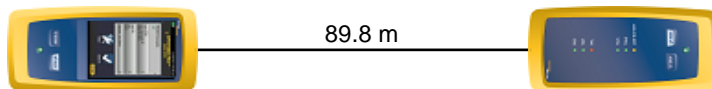
Main S/N: 1737099

Remote S/N: 1737098

Main Adapter: DSX-PLA804

Remote Adapter: DSX-PLA804

Length (m), Limit 90.0	[Pair 45]	89.8
Prop. Delay (ns), Limit 498	[Pair 12]	452
Delay Skew (ns), Limit 44	[Pair 12]	18
Resistance (ohms), Limit 21.00	[Pair 12]	17.01
Insertion Loss Margin (dB)	[Pair 12]	2.9
Frequency (MHz)	[Pair 12]	247.0
Limit (dB)	[Pair 12]	30.5



Worst Case Margin Worst Case Value

PASS	MAIN	SR	MAIN	SR
Worst Pair	36-45	36-78	36-45	36-78
NEXT (dB)	3.8	0.6*	5.1	0.6
Freq. (MHz)	166.0	243.5	238.5	243.5
Limit (dB)	38.3	35.5	35.7	35.5
Worst Pair	36	36	36	36
PS NEXT (dB)	5.1	2.3	5.3	2.3
Freq. (MHz)	226.5	243.0	238.5	243.0
Limit (dB)	33.4	32.9	33.0	32.9

PASS	MAIN	SR	MAIN	SR
Worst Pair	45-36	36-45	45-36	36-45
ACR-F (dB)	2.0	2.0	2.5	2.7
Freq. (MHz)	134.5	134.5	217.0	217.0
Limit (dB)	21.6	21.6	17.5	17.5
Worst Pair	36	45	36	45
PS ACR-F (dB)	4.3	4.9	4.3	5.0
Freq. (MHz)	217.0	106.5	217.0	217.0
Limit (dB)	14.5	20.6	14.5	14.5

PASS	MAIN	SR	MAIN	SR
Worst Pair	36-78	36-78	12-36	36-78
ACR-N (dB)	5.8	3.9	9.8	3.9
Freq. (MHz)	45.8	243.0	247.0	243.0
Limit (dB)	35.1	5.4	5.0	5.4
Worst Pair	78	36	36	36
PS ACR-N (dB)	7.5	5.9	9.3	5.9
Freq. (MHz)	45.8	243.5	247.5	243.5
Limit (dB)	32.6	2.7	2.3	2.7

PASS	MAIN	SR	MAIN	SR
Worst Pair	36	36	45	36
RL (dB)	1.9*	2.9	3.2	6.4
Freq. (MHz)	3.9	3.9	166.5	249.5
Limit (dB)	21.0	21.0	11.8	10.0

Compliant Network Standards:

10BASE-T	100BASE-TX	100BASE-T4
1000BASE-T	2.5GBASE-T	5GBASE-T
ATM-25	ATM-51	ATM-155
100VG-AnyLan	TR-4	TR-16 Active
TR-16 Passive		

* Measurement is within the accuracy limits of the instrument.