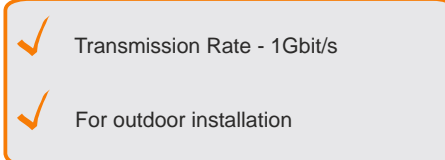


EC-UU004-5E-PE-BK-1 - 100m

EC-UU004-5E-PE-BK - 305m

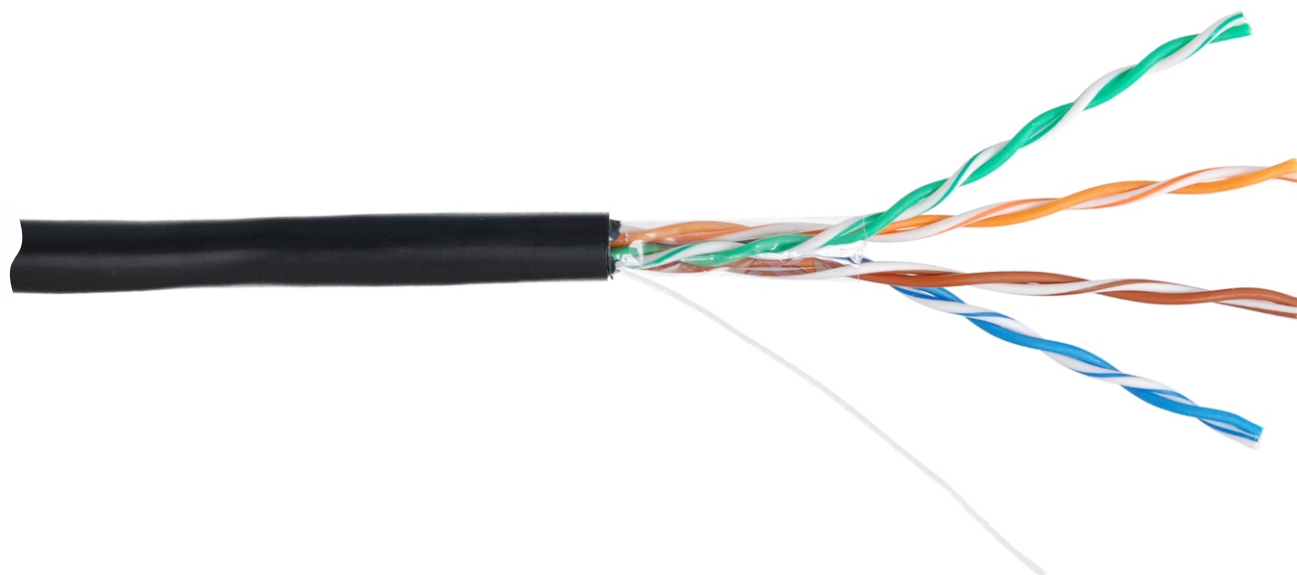
NETLAN Cable U/UTP 4 pairs, Cat. 5e (Class D), 100MHz, Solid, BC (bare copper), Outdoor, PE -40C, Black



A four-pair cable based on twisted pair cable, category 5e is used to organize high-speed cable segments with data transfer rates up to 1 Gbit / s. It can also be used to transmit analog information.

Cable EC-UU004-5E-PE-BK contains 4 pairs of twisted copper conductors, made in unshielded design, corresponds to category 5e and is designed for external installation.

It is delivered in cardboard boxes, on 305 m. For ease of transportation and better preservation, two boxes with cable are additionally combined into one common transport cardboard box.



Basic equipment:
Cable

EC-UU004-5E-PE-BK-1
100m

EC-UU004-5E-PE-BK
305m

Manufacturer reserves the right to change external view and characteristics of product without reducing it's consumer properties

CHARACTERISTICS

P/N	EC-UU004-5E-PE-BK-1	EC-UU004-5E-PE-BK
Category	5e	
Bandwidth, MHz	100	
Type	UTP	
Number of pairs	4	
Material of conductors	Copper	
Type of conductors	Solid	
Diameter of conductors, mm	0.47	
Insulation material	HDPE	
Insulation conductor thickness, mm	0.19 ± 0.02	
Diameter of conductor insulation, mm	0.85 ± 0.05	
Outer jacket material	PE	
Application	For outdoor laying	
Jacket thickness, mm	0.5 ± 0.05 mm	
Outer jacket diameter, mm	4.9 ± 0.2 mm	
Jacket color	Black	
Protective film	Polyester	
Ripcord	Yes	
Mass density (kg) per unit length (km)	23.0	
Radius of bending during laying	No less 8	
Radius of bending during operation	No less 4	
Maximum tensile strength	No less 80	
Characteristic impedance, ohms	100 ± 15	
Compliance	Meets the requirements of standards: ISO/IEC 11801, EN 50173 TIA/EIA-568	
Supported Applications	10BASE-T, 100BASE-TX, 100BASE-T4, 1000BASE-T, ATM-25, ATM-51, ATM-155, 100VG-AnyLan, TR-4, TR-16 Active, TR-16 Passive	
Length, M	100	305
Temperature ranges	Storage from -40 to +60 °C. Installation from 0 to +50 °C. Operation from -40 to +60 °C	
Warranty	1 year	

ORDERING TABLE

P/N	Cat.	Type	Application	Color	Length, M	Volume, m3	Weight, kg
EC-UU004-5E-PE-BK-1	5e	UTP	For outdoor laying	Black	100	0.020000	2.260
EC-UU004-5E-PE-BK	5e	UTP	For outdoor laying	Black	305	0.033462	8.600

Manufacturer reserves the right to change external view and characteristics of product without reducing it's consumer properties



Cable ID: EC-UU004-5E-PE-BK

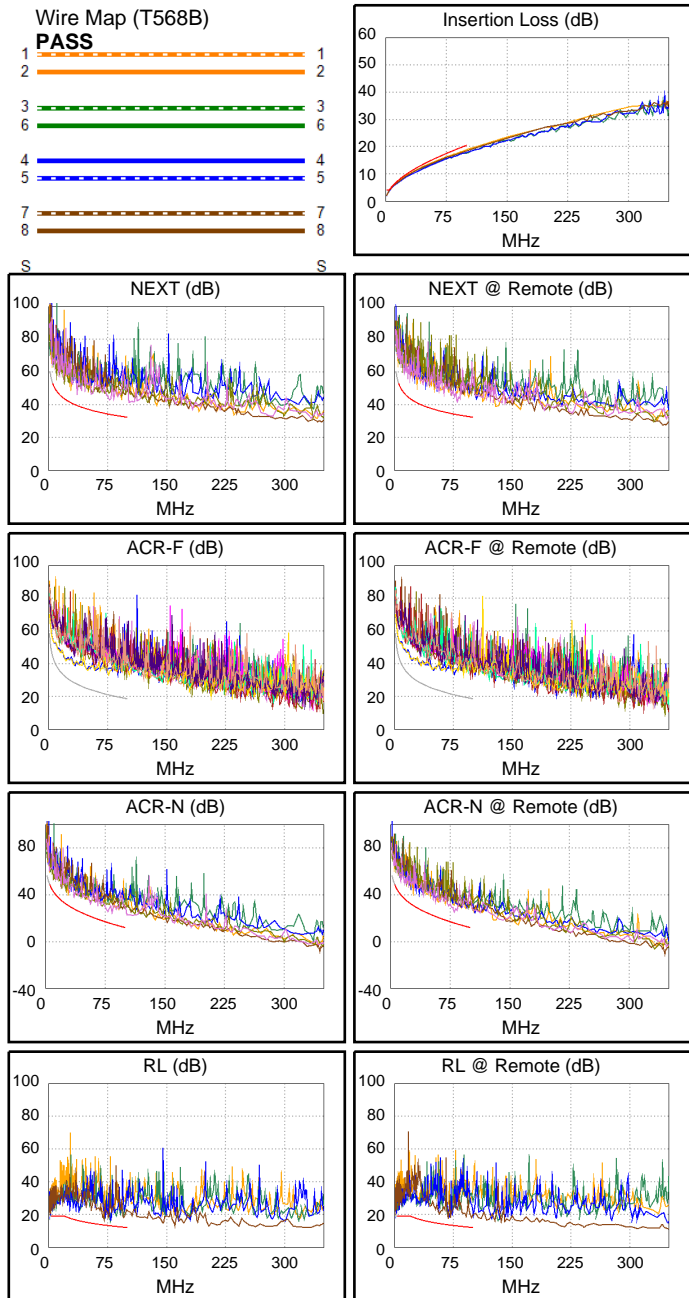
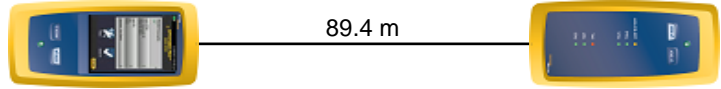
Date / Time: 15/07/2019 10:18:29
Headroom 7.7 dB (NEXT 45-78)
Test Limit: ISO11801 PL Class D
 Cable Type: Cat 5e U/UTP
 NVP: 69.0%

Operator: ROMAN NIKIFOROV
 Software Version: V6.2 Build 1
 Limits Version: V7.2
 Calibration Date:
 Main (Module): 07/08/2018
 Remote (Module): 07/08/2018

Test Summary: PASS

Model: DSX-8000
 Main S/N: 1737098
 Remote S/N: 1737099
 Main Adapter: DSX-PLA804
 Remote Adapter: DSX-PLA804

Length (m), Limit 90.0	[Pair 45]	89.4
Prop. Delay (ns), Limit 498	[Pair 12]	448
Delay Skew (ns), Limit 44	[Pair 12]	16
Resistance (ohms), Limit 21.00	[Pair 78]	19.10
Insertion Loss Margin (dB)	[Pair 12]	1.5
Frequency (MHz)	[Pair 12]	100.0
Limit (dB)	[Pair 12]	20.4



Worst Case Margin Worst Case Value

PASS	MAIN	SR	MAIN	SR
Worst Pair	45-78	45-78	45-78	45-78
NEXT (dB)	7.9	7.7	8.0	7.7
Freq. (MHz)	78.3	80.0	83.5	80.0
Limit (dB)	34.1	33.9	33.6	33.9
Worst Pair	78	45	45	45
PS NEXT (dB)	9.8	10.2	10.1	10.2
Freq. (MHz)	56.5	80.0	83.5	80.0
Limit (dB)	33.4	30.9	30.6	30.9

PASS	MAIN	SR	MAIN	SR
Worst Pair	78-12	12-78	36-45	45-36
ACR-F (dB)	10.1	10.3	14.1	14.2
Freq. (MHz)	22.0	22.3	97.0	97.0
Limit (dB)	31.8	31.7	18.9	18.9
Worst Pair	12	78	78	12
PS ACR-F (dB)	12.7	12.4	14.0	15.5
Freq. (MHz)	22.0	5.3	88.3	88.0
Limit (dB)	28.8	41.2	16.7	16.7

PASS	MAIN	SR	MAIN	SR
Worst Pair	45-78	45-78	45-78	45-78
ACR-N (dB)	8.9	9.4	9.7	9.4
Freq. (MHz)	36.3	80.0	83.5	80.0
Limit (dB)	27.7	15.8	15.1	15.8
Worst Pair	78	45	36	78
PS ACR-N (dB)	10.8	12.1	13.8	12.1
Freq. (MHz)	36.3	79.8	93.0	80.0
Limit (dB)	24.7	12.9	10.2	12.8

PASS	MAIN	SR	MAIN	SR
Worst Pair	36	78	36	78
RL (dB)	2.4	3.9	2.4	4.0
Freq. (MHz)	78.5	68.3	78.5	68.5
Limit (dB)	13.1	13.7	13.1	13.6

Compliant Network Standards:
 10BASE-T 100BASE-TX 100BASE-T4
 1000BASE-T 2.5GBASE-T ATM-25
 ATM-51 ATM-155 100VG-AnyLan
 TR-4 TR-16 Active TR-16 Passive