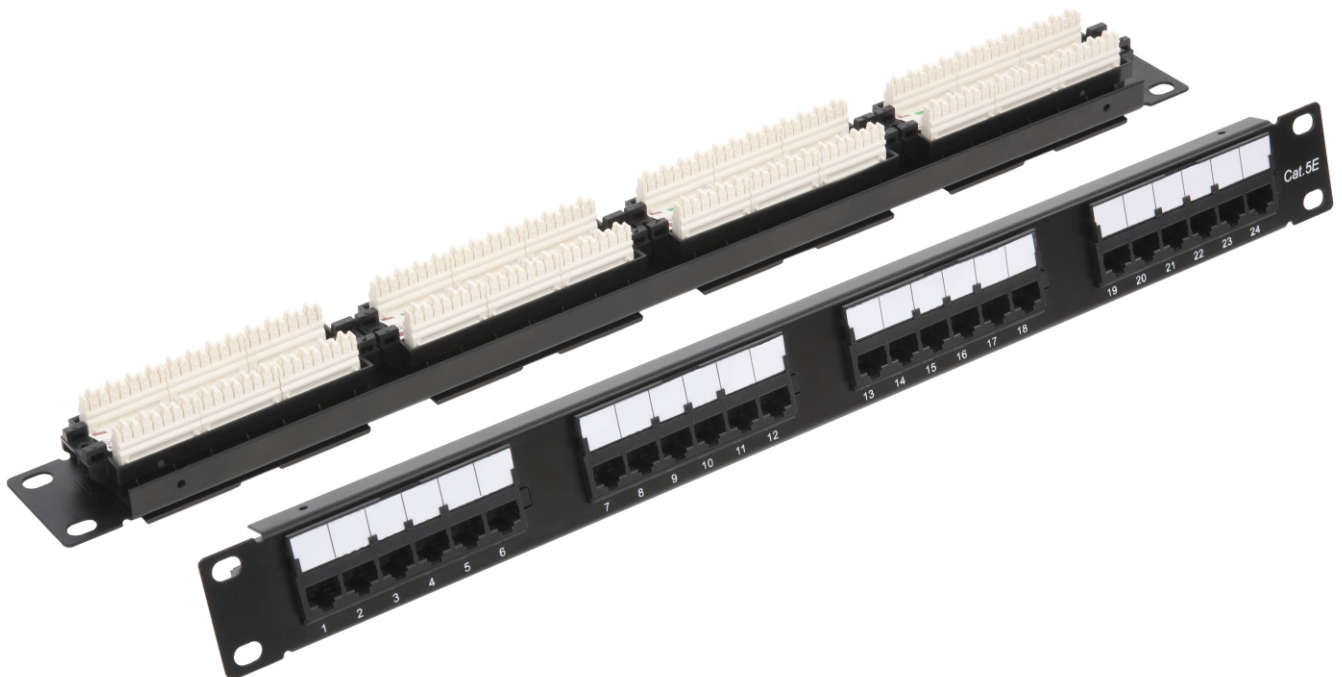


UEC-URP-24-UD2

✓ Best prices

Patch Panel ULAN 19", 1U, 24 Ports, Cat. 5e (Class D), 100MHz, RJ 45/8P8C, 110/KRONE, T 568A/B, Unshielded, Black

The patch panel UEC-URP-24-UD2 is designed for mounting in a 19" cabinet or rack and has 24 RJ 45 / 8P8C ports of category 5e. The patch panel is made in classic black and has universal 110 / KRONE contacts with color marking according to the T 568A standard / B on the back side. For ease of administration, all ports are numbered, and there are additional marking pads on the patch panels.



Basic equipment:

Patch panel	1 pc.
Screed Kit	1 pack
Screw	4 pcs
Label sheet for additional marking	1 pc.
Labels with wiring diagram for the back of the panel	4 pcs
Labels protector	4 pcs

Manufacturer reserves the right to change external view and characteristics of product without reducing it's consumer properties

CHARACTERISTICS

P/N	UEC-URP-24-UD2
Category	5e
Bandwidth, MHz	100
Execution	Unshielded
Number of ports	24
Height, U	1
Connector type	RJ45/8P8C
Contact coating material	Gold, 3 microinches
Type of IDC contacts	110/KRONE
IDC coating material	C5191
Permissible diameter of conductors, mm	0,511-0,404
Layout diagram	T568A/B
Plastic material	UL94V-0
Marking	All ports are numbered, there are additional marking areas
Installation	19" Cabinet or rack
Material of the supporting structure	Steel 1.5 mm
Color	Black
Compliance	ISO/IEC 11801, EN 50173 TIA/EIA-568
Supported Applications	10BASE-T, 100BASE-TX, 100BASE-T4, 1000BASE-T, ATM-25, ATM-51, ATM-155, 100VG-AnyLan, TR-4, TR-16 Active, TR-16 Passive
Temperature ranges	Storage -40 to +70 ° C. Installation 0 to +50 ° C. Operating 0 to +70 ° C
Warranty	1 year

ORDERING TABLE

P/N	Category	Execution	Height, U	Number of ports	Volume, m3	Weight, kg
UEC-URP-24-UD2	5e	Unshielded	1	24	0,001212	0,520